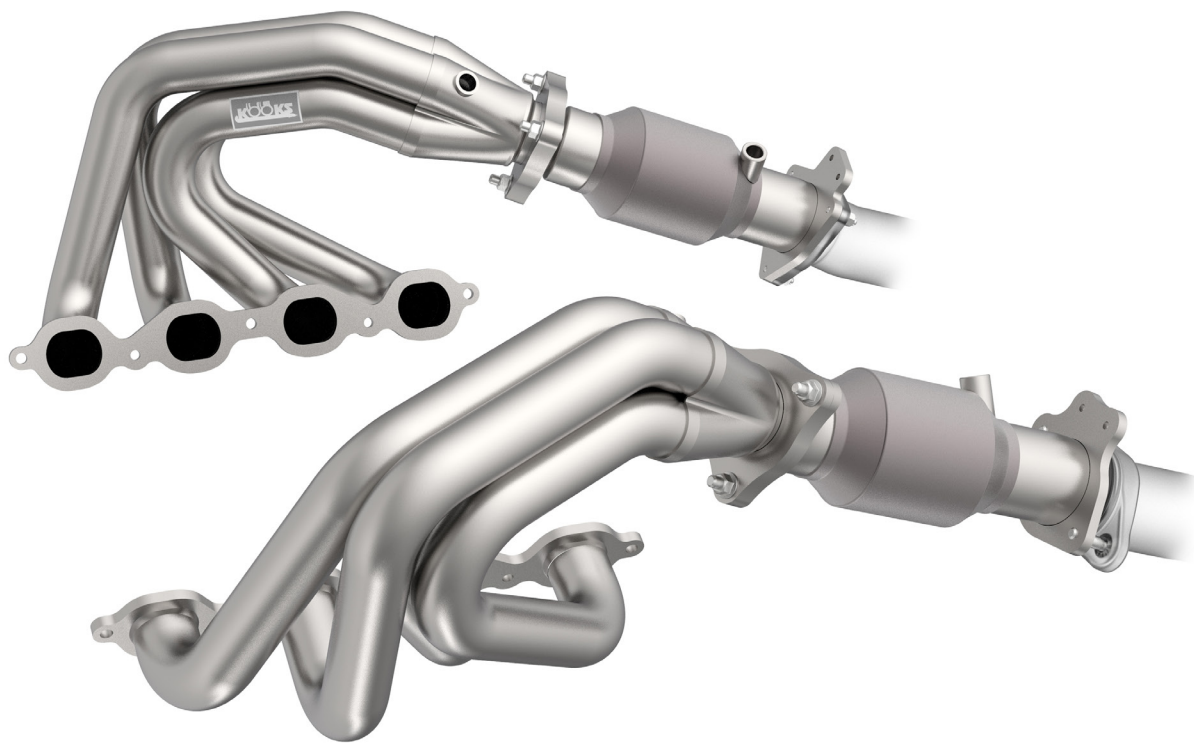


2020 Chevrolet C8 Corvette Headers Installation Instructions



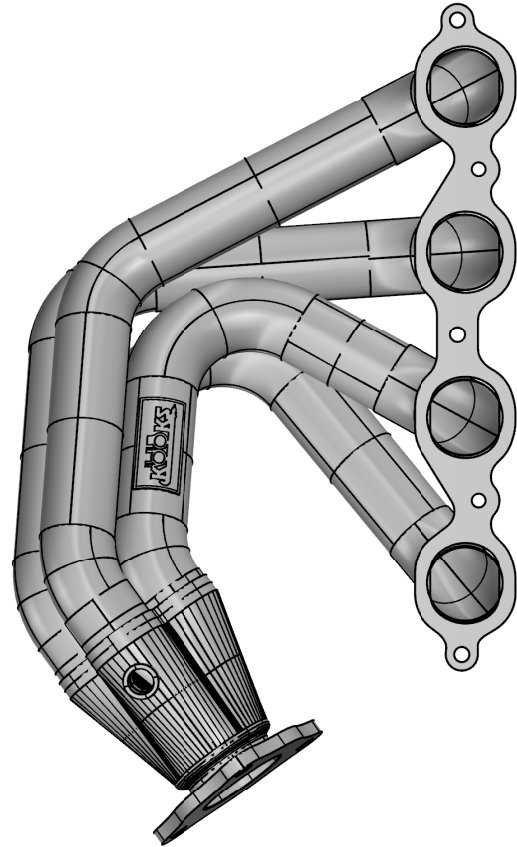
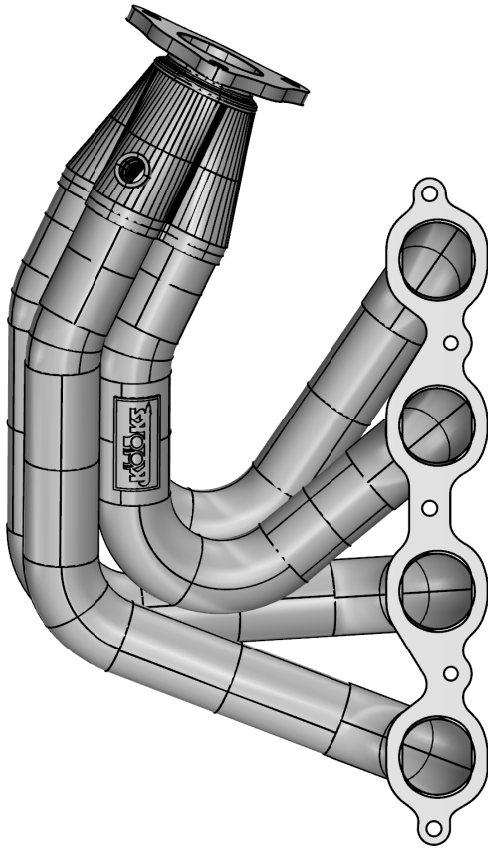
**Thank you for your purchase, we appreciate your business.
If additional assistance is needed, please contact Kooks Headers and Exhaust
Toll free at 1-866-586-KOOK or contact your local dealer.**

Kooks Custom Headers - 141 Advantage Place Statesville, NC 28677
www.KooksHeaders.com

- Part List (Headers) -

Components to Ship With -

- 1) 755897 - Gaskets
- 1) BK106

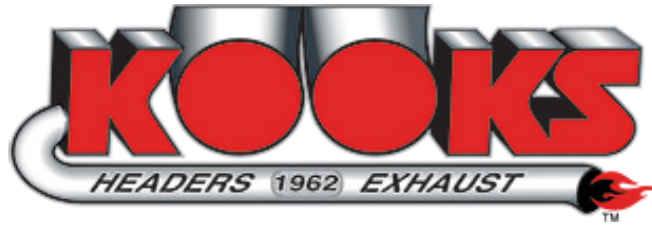


2020 C8 Corvette

21801400 - 1 7/8" x OEM Header
21801600 - 2" x OEM Header

- Parts List (Connections) -

Components to Ship With -	Components to Ship With -
<p>(6) Threaded Studs (M10 - 42mm long) (2) Threaded Studs (M10 - 57mm long) (3) Threaded Studs (M8 - 35mm long)</p> <p>(6) M10x1.5 - 30mm long Hex head bolt (2) M10x1.5 - 45mm long Hex head bolt (3) M8x1.25 - 30mm long Hex head bolt (4) M8x1.25 - 20mm long Hex head bolt (8) M10 washers (8) M10 Lock Washers (7) M8 Washers (7) M8 Lock Washers</p> <p>(1) PY-8039-AL - 3 Bolt Gasket</p>	<p>(6) Threaded Studs (M10 - 42mm long) (2) Threaded Studs (M10 - 57mm long) (3) Threaded Studs (M8 - 35mm long)</p> <p>(6) M10x1.5 - 30mm long Hex head bolt (2) M10x1.5 - 45mm long Hex head bolt (3) M8x1.25 - 30mm long Hex head bolt (4) M8x1.25 - 20mm long Hex head bolt (8) M10 washers (8) M10 Lock Washers (7) M8 Washers (7) M8 Lock Washers</p> <p>(1) PY-8039-AL - 3 Bolt Gasket</p>
<p>(3) M10x1.5 - 42mm long Threaded Studs or (3) M10x1.5-30mm long bolt-washer-lock washer</p> <p>(2) M8x1.25 - 20mm long bolt-washer-lock washer</p> <p>(2) M10x1.5 - 45 long Threaded Studs or (2) M10x1.5-45mm long bolt-washer-lock washer</p>	<p>(3) M10x1.5 - 42mm long Threaded Studs or (3) M10x1.5-30mm long bolt-washer-lock washer</p> <p>(2) M8x1.25 - 20mm long bolt-washer-lock washer</p> <p>(2) M10x1.5 - 45 long Threaded Studs or (2) M10x1.5-45mm long bolt-washer-lock washer</p>
<p>21803100 - Non-Catted Connections OEM x 3"</p>	<p>21803300 - Green Catted Connections OEM x 3"</p>



Do not attempt this installation if proper safety equipment is not available to you - seek the assistance of a professional installer

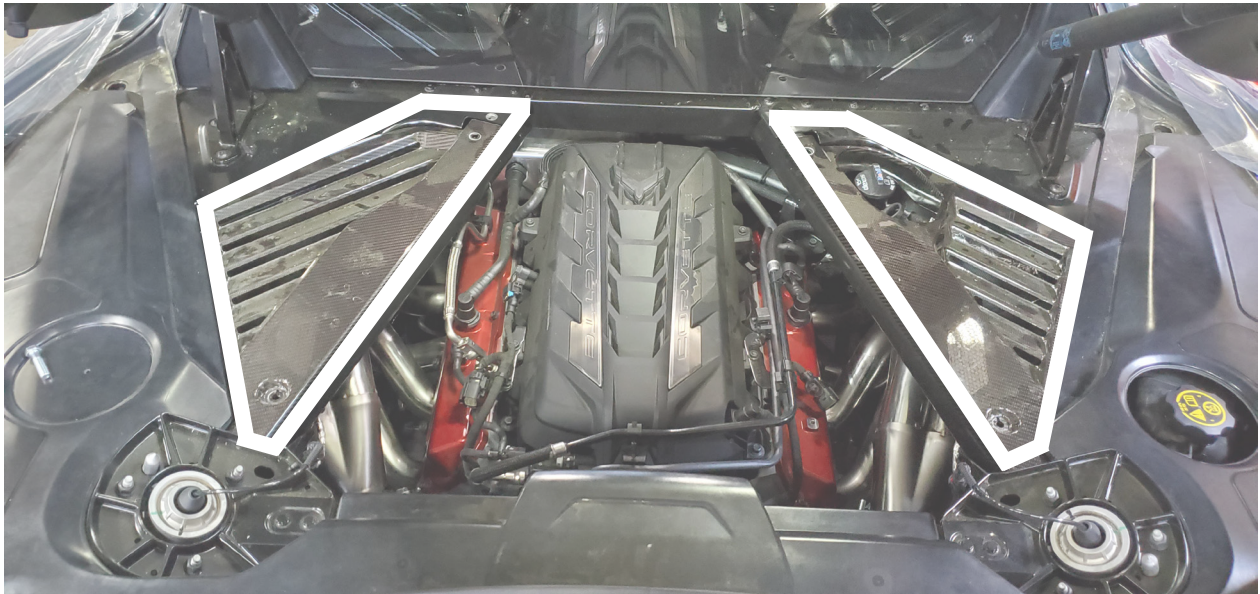
Read and understand all instructions before beginning Vehicle Preparation

****For header and/or connection install a lift is not required****

Always disconnect the battery before performing this type of work on any vehicle

OEM Manifold Removal

- Remove panels located above headers.





- Remove frame struts (connect firewall to strut tower)

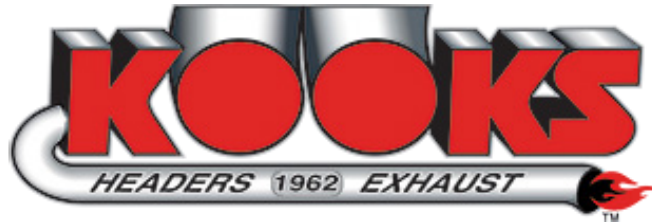


- Unplug and unbolt O2 sensors, note where they go for the install
- Remove manifold heat shielding (4 pieces per side)
- Unbolt connection to catted pipes
- Unbolt factory manifold from head
- Remove manifolds from vehicle

OEM Manifold Removal

- If installing catted connections only the header still need to be removed
- Remove trunk liner
- Remove air box left and right side connections





- Unplug and unbolt O2 sensors, note where they go for the install
- Unbolt hanger from catted pipe.
- Unbolt connection to exhaust. Driver side has a donut gasket - this will be reused. Passenger side has a 3 bolt steel gasket, we supply a replacement gasket for this connection.
- Remove catted pipes from vehicle

KOOKS Connection Installation

- Use supplied hardware to connect to exhaust. Kit comes with studs and bolts. We recommend using the bolts with washers and lock washers. Studs will make the install easier if tools are limited. See drawing on Page 3 to see hardware locations
- Bolt on hangers using supplied hardware
- Bolt in O2 sensor in original locations and plug into harness
- Continue to see install of Kooks headers

KOOKS Headers Installation

- Clean head surface where gasket seals
- Install gasket and header from top of vehicle - Connect to studs on catted connections.
- Install all head bolts and torque to factory specs
- Bolt on connection to catted pipes with supplied hardware and torque to factory specs
- Bolt in O2 sensor in original locations and plug into harness
- Reinstall frame studs
- Reinstall panels on top of frame struts
- Clean all fingerprints/oil/grease from exhaust prior to starting engine
- Start engine and check for exhaust leaks (tighten clamps as needed)
- Allow engine to complete one full heat cycle (heat to operating temp, cool to ambient temp)
- Re-torque all connections

**Thank you for your purchase, we appreciate your business.
If additional assistance is needed, please contact Kooks Headers and Exhaust
Toll free at 1-866-586-KOOK or contact your local dealer.**